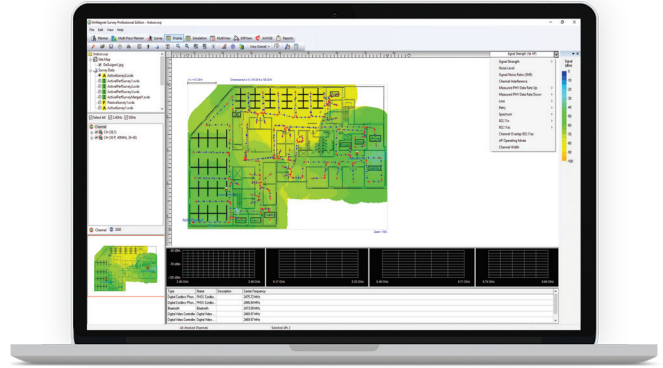


# AirMagnet® Survey PRO

## Wireless Site Survey Software

### Key Features

- Plan and design Wi-Fi networks without physically rolling out any access points
- Collect real-world data by performing true end-user experience measurements using any Wi-Fi adapter
- Generate heatmaps that provide full visibility of WLAN coverage, interference, throughput, data rates, retries, loss, Voice-over-Wi-Fi MOS, and more
- Save time by performing active, passive, and spectrum surveys in a single walk-through



### Overview

AirMagnet Survey PRO enables network professionals to design, deploy, and validate 802.11 wireless LAN networks for optimal performance, security, and compliance. It also calculates the ideal quantity, placement, and configuration of APs for a successful wireless LAN deployment. This solution goes beyond simply verifying RF coverage, by plotting actual end-user network performance in terms of connection speed, throughput, and packet statistics. Survey PRO helps you get Wi-Fi installations right the first time, preventing costly rework and user complaints.

### Capabilities

#### 802.11 Survey

- Measure and assess end-user experience
- Shows coverage of specific 802.11 parameters:
  - Modulation and Coding Schemes (MCS)
  - Channel width
  - Operating mode (802.11 a/b/g/n/ac)
- Complete Wi-Fi heatmap of performance metrics
- Allows IT staff to design and deploy WLAN accurately

#### Real-world Data

- Emulates real-world client behavior
- Reduces site surveying time
- Create “what-if” scenarios:
  - Changing AP transmit power
  - Channel
  - Environmental noise
- Simulate moving, removing, or adding APs
- Avoid interference and over-allocation

#### Outdoor

- Fully-automated outdoor wireless site surveys
- Leverage GPS device to collect outdoor wireless data
- Import street maps of any city
- Export heatmaps into Google Earth™

#### Integration

- Accurately design WLANs by:
  - Modeling building construction materials/obstructions
  - Finding ideal AP placement
  - Visualizing coverage across multiple floors
- Perfect planning models over time
- Validate results with real-world data
- Account for RF interference from non-802.11 devices
- Test plans against design requirements

#### VoWLAN Deployment

- Built-in voice readiness verification system
- Validate and plot:
  - Phone call quality
  - Capacity
  - Other voice specific parameters

# AirMagnet® Survey PRO

## Wireless Site Survey Software

### Models and Accessories

Models	Contents
AM/A4018	AirMagnet Survey PRO (includes Planner)
AM/A4018-1YS	1 year AllyCare Support for AirMagnet Survey PRO (includes Planner) — AM/A4018
AM/A4018-3YS	3 year AllyCare Support for AirMagnet Survey PRO (includes Planner) — AM/A4018
AM/B4010	AirMagnet Survey Express
AM/B4010-1YS	1 year AllyCare Support for AirMagnet Survey Express — AM/B4010
AM/B4010-3YS	3 year AllyCare Support for AirMagnet Survey Express — AM/B4010
AM/A4016G	AirMagnet Survey Express to Survey PRO (Upgrade Model)
AM/A4016G-1YS	1 year AllyCare Support for AirMagnet Survey Express to PRO — AM/A4016G
AM/A4016G-3YS	3 years AllyCare Support for AirMagnet Survey Express to PRO — AM/A4016G
AM/B4070	AirMagnet Spectrum XT (optional)
AM/B4070-1YS	1 year AllyCare Support for AirMagnet Spectrum XT — AM/B4070 (USB based)
AM/B4070-3YS	3 year AllyCare Support for AirMagnet Spectrum XT — AM/B4070 (USB based)
AM/D1095	AirMagnet Multi-adapter kit for Survey (different versions available depending on regulatory domain)

### System Requirements

#### Laptop/Notebook PC/Tablet PC

Operating Systems: Microsoft® Windows 7 Enterprise/Professional/Ultimate 64-bit, or Microsoft Windows 8.1 Pro/Enterprise 64-bit or Microsoft® Windows 10 Pro/Enterprise 64-bit

Intel® Core™ 2 Duo 2.00 GHz (Intel® Core™ i5 or higher recommended)

24 GB RAM or higher

800 MB free hard disk space

An ExpressCard slot or USB port, multiple ports in the PC when using multiple adapters. MULTI-ADAPTER KIT recommended.

Google Earth must be installed in order to export the GPS data for outdoor surveys to Google Earth (Survey PRO only)

For a list of GPS devices that have been approved for use with the AirMagnet Survey product, visit [netally.com](http://netally.com)

#### Apple® MacBook® PRO

Operating Systems: MAC OS X v10.5 (Leopard™) or higher running a supported Windows OS (as noted under Laptop/Notebook PC/Tablet PC section) using Boot Camp®

Intel®-based CPU 1.6 GHz or higher

4 GB or higher

800 MB free hard disk space

USB Port, multiple ports when using multiple adapters. AirMagnet recommends the use of its MULTI-ADAPTER KIT.

Google Earth must be installed in order to export the GPS data for outdoor surveys to Google Earth (Survey PRO only)

For a list of GPS devices that have been approved for use with the AirMagnet Survey product, visit [netally.com](http://netally.com)



[netally.com/products/survey](http://netally.com/products/survey)