

# 照光式スイッチ／ILLUMINATED SWITCHES

## MS-720・730 シリーズ／SERIES

ご注文の際は下記の例に準じてご用命下さい。

### ORDERING INFORMATION

MS-720 L - 1 - C - N - カラー Color - ボルト Voltage Select

1 2 3 4 5

1	2		3		4	
シリーズ Series NO.	適合表示灯の種類 Kind of Applicable Indicator		回路 Circuit		釦形状 Shape of Push button	
MS-720	L	LED	1	1回路 SPDT	C	丸型 Circle Shape
	F	白熱球 Filament Lamp	2	2回路 DPDT	S	正角型 Square Shape
MS-730	L	LED	1	1回路 SPDT	R	長角型 Rectangle Shape
	F	白熱球 Filament Lamp	2	2回路 DPDT	C	丸型 Circle Shape
					S	正角型 Square Shape
					R	長角型 Rectangle Shape

5		カラー Color	
取付金具の有無 Mounting Nut		LED Illuminator	白熱球 Filament Lamp Illuminator
N	ナット付 with Nut	R=赤 Red W=白 (透明キャップ) White (Clear Cap) Y=黄 Yellow G=緑 Green	R=赤 Red W=白 White Y=黄 Yellow G=緑 Green U=青 Blue
O	ワンタッチ取付 with Snap-in Plate		

表示方法		
	L(LED)	F(白熱球) F(Filament lamp)
N	(金ラベル) (Gold Label)	(銀ラベル) (Silver Label)
O	(L-刻印) (Die-Stamped-L)	(F-刻印) (Die-Stamped-F)

白熱球(種類)	Voltage Select
	6V
	12V
	28V

LED	白熱球 (F球) FILAMENT LAMP	表示灯交換用治具〔別売〕 Tools for replacing of indicating lamp (to be sold separately)																												
<table border="1"> <tr> <td>TEMPERATURE</td> <td>Ta=25°C</td> </tr> <tr> <td>REVERSE VOLTAGE</td> <td>12V</td> </tr> <tr> <td>FORWARD VOLTAGE</td> <td>6.3V</td> </tr> <tr> <td>VF (1F=15mA)</td> <td></td> </tr> <tr> <td>FORWARD CURRENT</td> <td>20mA</td> </tr> <tr> <td>APPROVAL CURRENT</td> <td>15mA</td> </tr> </table>	TEMPERATURE	Ta=25°C	REVERSE VOLTAGE	12V	FORWARD VOLTAGE	6.3V	VF (1F=15mA)		FORWARD CURRENT	20mA	APPROVAL CURRENT	15mA	<table border="1"> <tr> <td>VOLTAGE</td> <td>6V</td> <td>12V</td> <td>28V</td> </tr> <tr> <td>CURRENT</td> <td>65mA</td> <td>50mA</td> <td>24mA</td> </tr> <tr> <td>AVERAGE LIFE</td> <td>10,000</td> <td>10,000</td> <td>5,000</td> </tr> <tr> <td></td> <td>H</td> <td>H</td> <td>H</td> </tr> </table>	VOLTAGE	6V	12V	28V	CURRENT	65mA	50mA	24mA	AVERAGE LIFE	10,000	10,000	5,000		H	H	H	
TEMPERATURE	Ta=25°C																													
REVERSE VOLTAGE	12V																													
FORWARD VOLTAGE	6.3V																													
VF (1F=15mA)																														
FORWARD CURRENT	20mA																													
APPROVAL CURRENT	15mA																													
VOLTAGE	6V	12V	28V																											
CURRENT	65mA	50mA	24mA																											
AVERAGE LIFE	10,000	10,000	5,000																											
	H	H	H																											

# 照光式スイッチ／ILLUMINATED SWITCHES

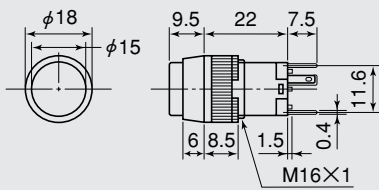
## MS-720・730 シリーズ／SERIES

MS-720 セルフロック／Latching

MS-730 ノンロック／Momentary

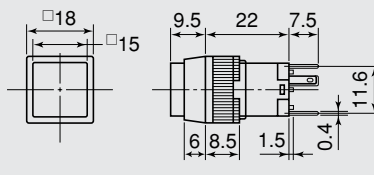
MS-720□-1-C-N

MS-730□-1-C-N



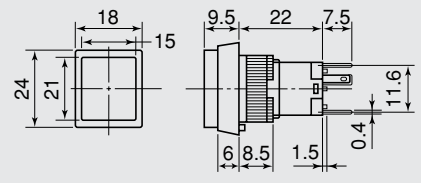
MS-720□-1-S-N

MS-730□-1-S-N



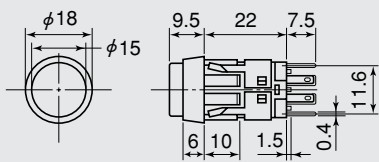
MS-720□-1-R-N

MS-730□-1-R-N



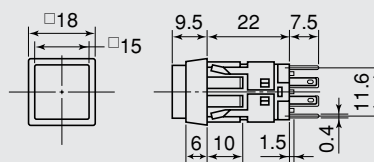
MS-720□-2-C-O

MS-730□-2-C-O



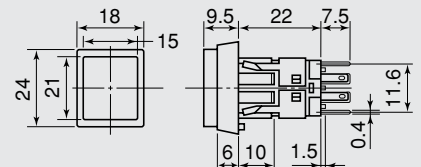
MS-720□-2-S-O

MS-730□-2-S-O

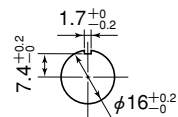


MS-720□-2-R-O

MS-730□-2-R-O

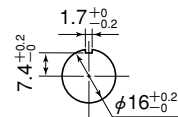


取付穴参考寸法  
Mounting Hole



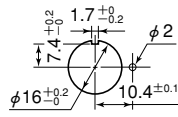
パネル板厚  
Panel Thickness  
1~4mm

取付穴参考寸法  
Mounting Hole



パネル板厚  
Panel Thickness  
1~4mm

取付穴参考寸法  
Mounting Hole



パネル板厚  
Panel Thickness  
1~4mm

品番	回路	スイッチ特性	電流容量	絶縁抵抗	絶縁耐圧	接触抵抗
PARTS NO.	CIRCUIT	SWITCHING FUNCTION	RATING	INSULATION RESISTANCE	VOLTAGE BREAKDOWN	CONTACT RESISTANCE
MS-720L	SPDT (3P)	ON-ON	3A.125V.AC 1A.250V.AC	DC.500V 100MΩ以上 (MIN)	AC.1500V 1分間 (Minute)	30mΩ以下 (MAX)
MS-730L	DPDT (6P)	ON-(ON)				
MS-720F	SPDT (3P)	ON-ON				
MS-730F	DPDT (6P)	ON-(ON)				

注記／NOTE

( ) = ノンロック／Momentary