

Products > SPORTING > Outdoor > SENS series

[About us](#)

[News](#)

[Social Responsibility](#)

## SENS CR



### Features

- CREE XP-G (R5) LED
- Maximum output of up to 190 lumens
- Highly effective current circuit board
- High efficiency circuit enables maximum runtime of up to 27 hours
- 3 brightness levels
- Active dimming system with auto-adjust function
- Soft turn-on mode and low illumination for everyday usage
- Convenient one-handed operation
- Board voltage circuit, compatible with primary or rechargeable Li-ion batteries
- Reverse polarity protection
- Equipped with integrated lens
- Constructed from aerospace grade aluminum alloy
- Type III military grade hard anodizing
- Special-made rhombic knurling for better grip
- Waterproof in accordance with IPX-8 (2 meters submersible)
- Tail stand ability

### Dimensions

Length: 64mm  
 Head Diameter: 19.8mm  
 Tail Diameter: 19.8mm  
 Weight: 23.8g (without battery)

### Accessories

Key chain, spare O-ring

### Reviews

1. [Welcome to the new "mystery magic lights" from Nitecore, the SENS series. --Eric-Selfbuild](#)
2. [Technology as a whole is moving forward, and Nitecore moving lighting technology forward with it. --Josh-Bigmac 97](#)
3. ["Gimme" or a "Gimmicky" :NITECORE new line of EDC lights featuring Active Dimming Technology \(ADT\). --Tim-TurboBB](#)
4. [NiteCore incorporates an accelerometer into its electronics to control and change output levels. --Meveel](#)
5. [Auto levels mode is really "idiot proof" and really effective. --TallnHairyDave](#)
6. [Here we stand, poised on the precipice of a new era in flashlights. --David](#)
7. [The more I use them, the more I really love these EDCs. --Run4jc](#)
8. [Check here for more amazing photoes of SENS. --Balazs](#)
9. [Dass das revolutionäre Konzept von Nitecore hier wirklich sinnvoll ist. --Marcel](#)
10. [NITECORE SENS! --Pablito](#)
11. [NITECORE Sens series reviews--dong](#)



### Optional accessory



### Related information

[Design and Features](#)

**NITECORE®**

ADT® (Active Dimming Technology) built-in. 5-8 times extended runtime

**SENS CR****190lumens**

- Innovative Active Dimming design offers automatic power saving
- In addition to 3 levels of brightness for mode switching on the fly

**NITECORE®**

ADT® (Active Dimming Technology) built-in. 5-8 times extended runtime

**SENS CR****190lumens**

### About ADT(Active Dimming Technology):

Nitecore SENS series flashlights feature an integrated acceleration sensor and micro processor which work together to calculate the distance of targets based on geometric theory. The sensor continuously detects the angle of the flashlight in relation to the floor, while the micro processor uses this data to vary the light output.

Real-world example: Turning a SENS series flashlight on with the head pointed straight up activates active dimming mode. When held in a horizontal position, output will seamlessly and automatically increase for illuminating targets at a distance. Alternatively, when held vertically output will seamlessly and automatically reduce for closer range targets. When used in ADT mode, SENS series flashlights enjoy significantly longer runtimes than competing products.



Active Dimming mode is accessed by turning the light on with head pointing upward

**NITECORE®**

ADT® (Active Dimming Technology) built-in. 5-8 times extended runtime

*SENS* **CR**

**190lumens**

**A twist-activated switch offers the convenience of one-handed operation**



**NITECORE®**

ADT® (Active Dimming Technology) built-in. 5-8 times extended runtime

*SENS* **CR**

**190lumens**

**Direct access to four modes**

The flashlight will detect the angle with the floor and select the appropriate brightness mode.



Direct access to ADT (Active-dimming) mode.



Direct access to high fixed output mode.



Direct access to medium fixed output mode.



Direct access to low fixed output mode.

**NITECORE®**

**SENS CR**

ADT® (Active Dimming Technology) built-in. **5-8 times extended runtime**

**190lumens**



**Compact size and intelligent design**

**NITECORE®**

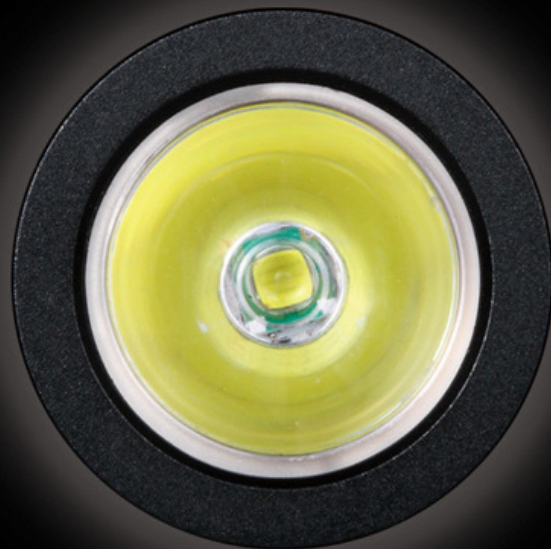
**SENS CR**

ADT® (Active Dimming Technology) built-in. **5-8 times extended runtime**

**190lumens**

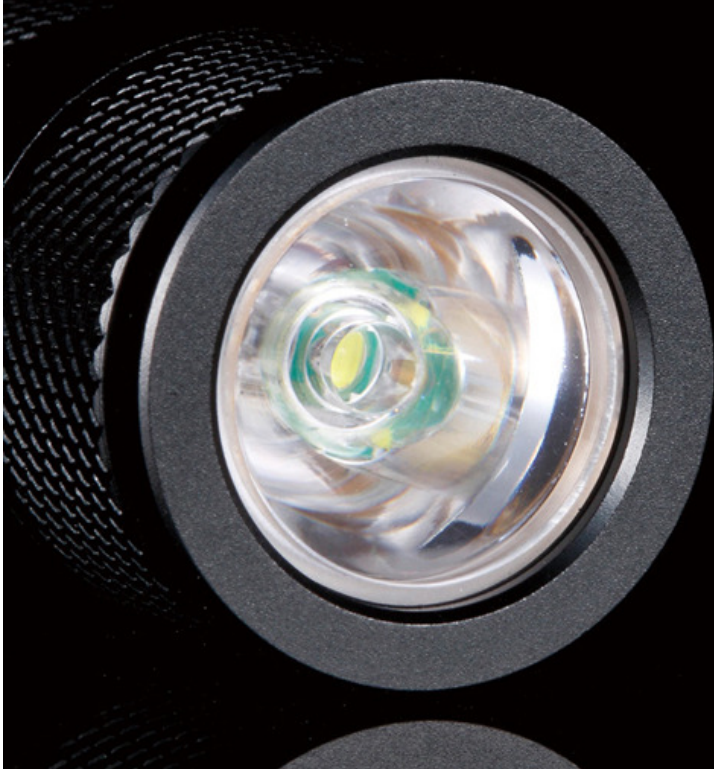
**Slim, sleek and compact:  
Nitecore SENS flashlights are  
ideal for every-day carry**



**NITECORE®**ADT® (Active Dimming Technology) built-in. **5-8 times extended runtime****SENS CR****190lumens****Your ultimate pocket/keychain light****NITECORE®**ADT® (Active Dimming Technology) built-in. **5-8 times extended runtime****SENS CR****190lumens****CREE XP-G (R5) LED**LED burn time of up to  
**50,000hours**

**NITECORE®**

ADT® (Active Dimming Technology) built-in. 5-8 times extended runtime

**SENS CR****190lumens**

**A TIR optical lens  
produces a large and  
consistent flood light.**

**NITECORE®**

ADT® (Active Dimming Technology) built-in. 5-8 times extended runtime

**SENS CR****190lumens**

**Features reverse polarity  
protection**

**NITECORE®**

**SENS CR**

ADT® (Active Dimming Technology) built-in. **5-8 times extended runtime**

**190lumens**



**Waterproof in accordance with IPX-8**  
(2 meters submersible)

**NITECORE®**

**SENS CR**

ADT® (Active Dimming Technology) built-in. **5-8 times extended runtime**

**190lumens**

**Power by CR123 battery**

Light and handy, ultra high performance



**NITECORE®**

ADT® (Active Dimming Technology) built-in. 5-8 times extended runtime

**SENS CR****190lumens****Various models available****SENS AA: Powered by 1xAA battery**

Affordable accessible power

**SENS CR: Powered by 1xCR123 battery**

Serious pocket power

**SENS Mini: Powered by 1xCR2 battery**

Extremely compact for everyday use

**NITECORE®**

ADT® (Active Dimming Technology) built-in. 5-8 times extended runtime

**SENS CR****190lumens****Features**

- CREE XP-G (R5) LED
- Maximum output of up to 190 lumens
- Highly effective current circuit board
- High efficient circuit enables maximum runtime of up to 27 hours
- Three preset brightness levels
- Active dimming system with auto-adjust function
- Soft turn-on mode and low illumination for everyday usage
- Convenient one-handed operation
- Broad voltage circuit, compatible with primary or rechargeable Li-ion batteries
- Reverse polarity protection
- Equipped with integrated optical lens
- Constructed from aerospace grade aluminum alloy
- Type III military grade hard anodizing
- Purpose-designed rhombic knurling for better grip
- Waterproof in accordance with IPX-8 (2 meters submersible)
- Able to tailstand for use as a candle.





**NITECORE®****SENS CR**ADT® (Active Dimming Technology) built-in. **5-8 times extended runtime****Dimensions**

Length: 64mm

Head Diameter: 19.8mm

Tail Diameter: 19.8mm

Weight: 23.8g (without battery)

**Accessories**

Key chain, spare O-ring

**190lumens**

FL1 STANDARD	HIGH	MID	LOW
	<b>190</b> LUMENS	<b>60</b> LUMENS	<b>20</b> LUMENS
	<b>2h</b>	<b>6h30min</b>	<b>27h</b>
	<b>76m (Beam Distance)</b>		
	<b>1450cd (Peak Beam Intensity)</b>		
	<b>1.5m (Impact Resistant)</b>		
	<b>IPX-8, 2m (Waterproof AND Submersible)</b>		

**NOTICE**

The stated data has been measured in accordance with the international flashlight testing standards ANSI/NEMA FL1, using SYSMAX CR123 battery (3V, 1550mAh) under laboratory conditions. The data may vary in real-world use due to different battery usage or environmental conditions.

copyright ©2012 NITECORE All rights reserved.